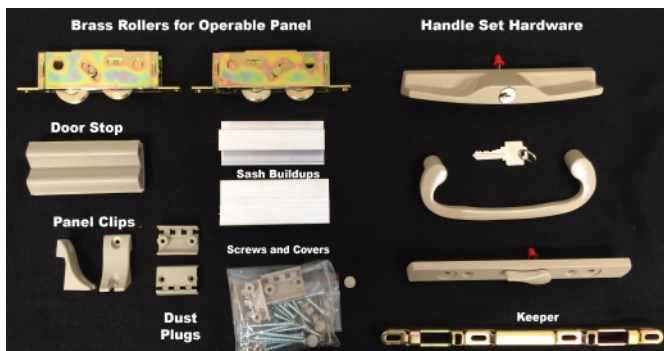


PD2000

Patio Door Installation Instructions



PD2000 Parts

- (4) Dust plugs
- (2) Panel Clips
- (1) Door Stop
- (2) Brass Roller Wheels
- (1) Handle Set Hardware + Keeper
- (2) Sash Buildups
- (1) Operating Door Panel
- (1) Fixed Door Panel
- (2) Jamb Assembly
- (1) Sill Assembly
- (1) Head Assembly
- (2) Threshold Covers
- Assorted screws and covers

I. Preparing the Opening

After removing the existing patio door frame, check the opening for any loose or rotted board, or any other obstructions which could affect the squareness and proper fit of your new PD2000 patio door. The sill must be level prior to installing the door frame. The rough opening should be 1/2" larger than the new frame.

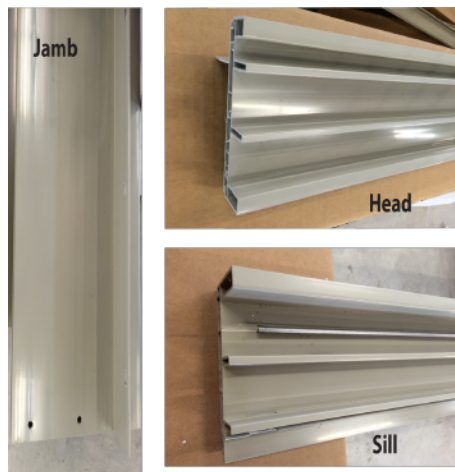


Figure 1

II. Assembling the Main Frame

(Figure 1)

Assemble the frame on a clean flat surface to avoid damage. The head, sill, and both jambs are already cut to size and machined properly for you. Twelve #8 x 2" truss head frame assembly screws are provided. Before fastening the sill to each jamb, apply adhesive back foam pad to sill end. Screw through the jamb into the screw holes in the sill and the head. After the frame is screwed together tightly, check sill to jamb joinery for proper gasket alignment.

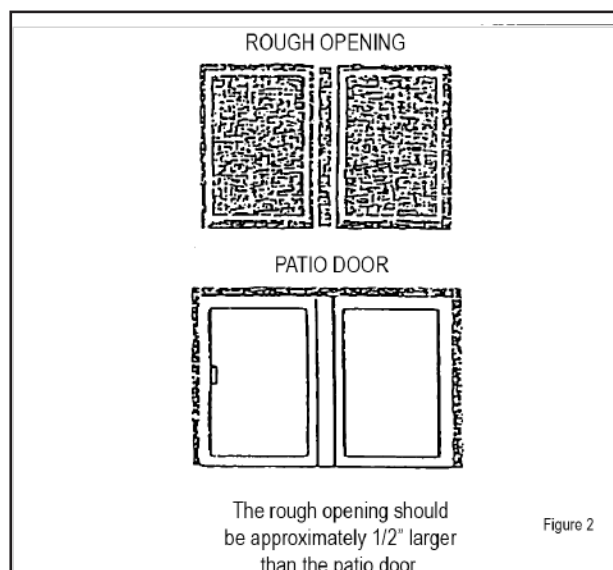


Figure 2

III. Install Frame into Rough Opening

(Figure 2)

A. A bead of sealant should be applied to the leading edge of the opening along the sill from jamb to jamb.

B. Insert the frame into the opening. The frame must be square, plumb, and level.

Use Wood shims to square frame into the opening. Use a level to ensure an even installation. Measure corner to corner distances (upper right to lower left and upper left to lower right). The frame is square when these distances are the same.

C. Screw through the jambs and head with the six #8 x 2" truss head screws provided.

IV. Installing the Panels

(Figure 3.)

A. Installing the operable panels

1. Install roller wheels to operating panel into dimpled screw locations.
2. Install the dust plug at the bottom of the interlock before installing the panel. Use two #6 x 1-1/4" flat head screws.
3. From the exterior side, insert the operating panel top into the interior pocket of the frame head. The interlock must be to the center of the frame facing the outside of the house.
4. Swing panel bottom in and lower panel into place with wheels of rollers on sill track.
5. Ensure the operating panel rolls freely on the track with no dragging or noticeable obstruction.

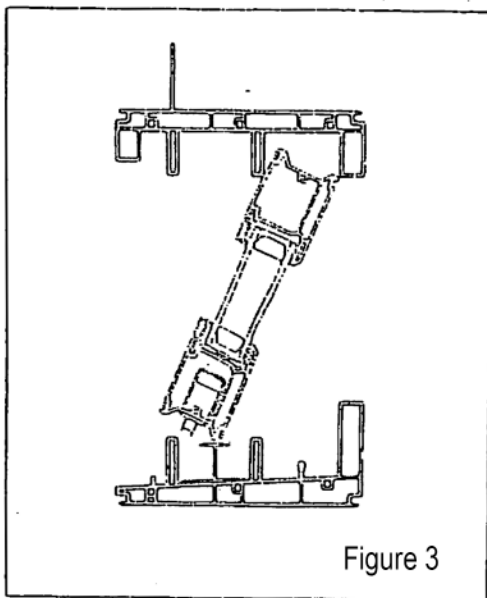


Figure 3

6. Roll operating panel to within 1/2" from the jamb. The distance between the panel and the jamb are EXACTLY equal at the top, middle and bottom.

7. To align panel with frame jamb, adjust roller height by turning roller adjustment screw *(use phillips type screw driver through processed hole at each stile)* clockwise to raise panel. The operating panel may be raised or lowered to make it even with the fixed panel.

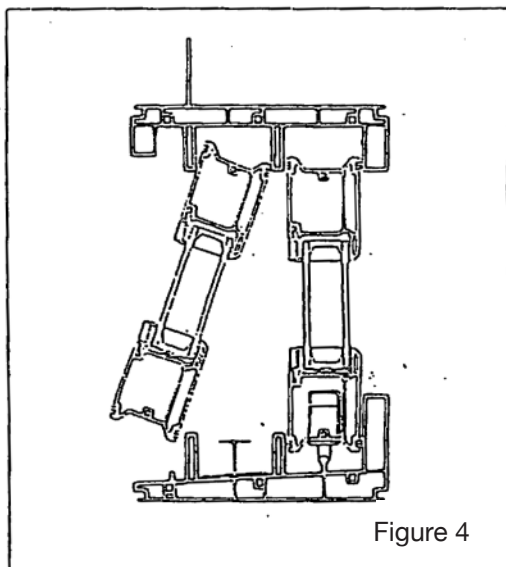


Figure 4

B. Installing the Fixed Panel *(Figure 4)*

1. Install sash buildups in exterior sill track.
2. Install the dust plug at the bottom of the interlock before installing panel with two #6 x 1-3/4" flat head screws.
3. From the exterior side, insert the fixed panel top into the exterior pocket in the frame head. The interlock must be toward the center of the frame facing the inside of the house.
4. Swing panel bottom in and lower to rest on the sill in the exterior pocket.
5. Push fixed panel toward jamb until it is about 1/2" from jamb. The distance between the fixed panel and the jamb must be exactly equal at the top, middle and bottom. If the distance is not equal, the frame must be squared up before proceeding.
6. Ensure both panels are square and level with each other and with the main frame before continuing with final panel installation.

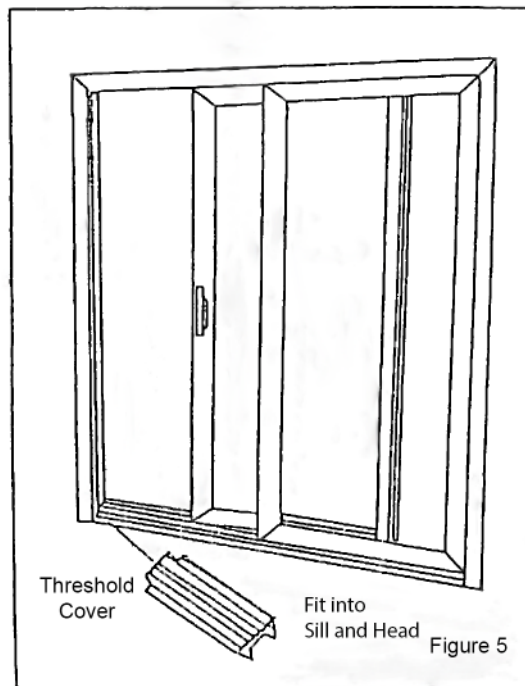


Figure 5

C. Final Panel Installation *(Figure 5)*

1. Slide panels past one another exposing the interlocks. Attach the dust plugs to the top of each interlock with two #6 x 1-3/4" flat head screws per plug. Attach to interlock. Slide panels past one another towards their respective jams.
2. Assemble the handle set onto the operable panel stile. Check the operation by using the turn lever and key.
3. After door panels are completely installed, leveled, and even with each other, the lock keeper can be attached to the frame jamb.
4. Slide operable panel into the jamb and lock it.
5. With the operable panel in locked position, move the fixed panel into the jamb until the interlocks are fully engaged.
6. Secure fixed panel using the two molded clips. Attach clips to the frame and sash with #8 x 1" truss head screws.
7. Insert threshold cover over the exterior sill and head pocket.
8. Install the door stop in the inside pocket of the head at the fixed side jamb.

V. Final Installation & Screen

- A. Check door panels for proper alignment and operation.
- B. Caulk to the rough opening.
- C. Trim as desired
- D. Install the screen.